

CARTE D' APPROCHE A VUE  
VISUAL APPROACH CHART

**MOUNTAINOUS AREA**

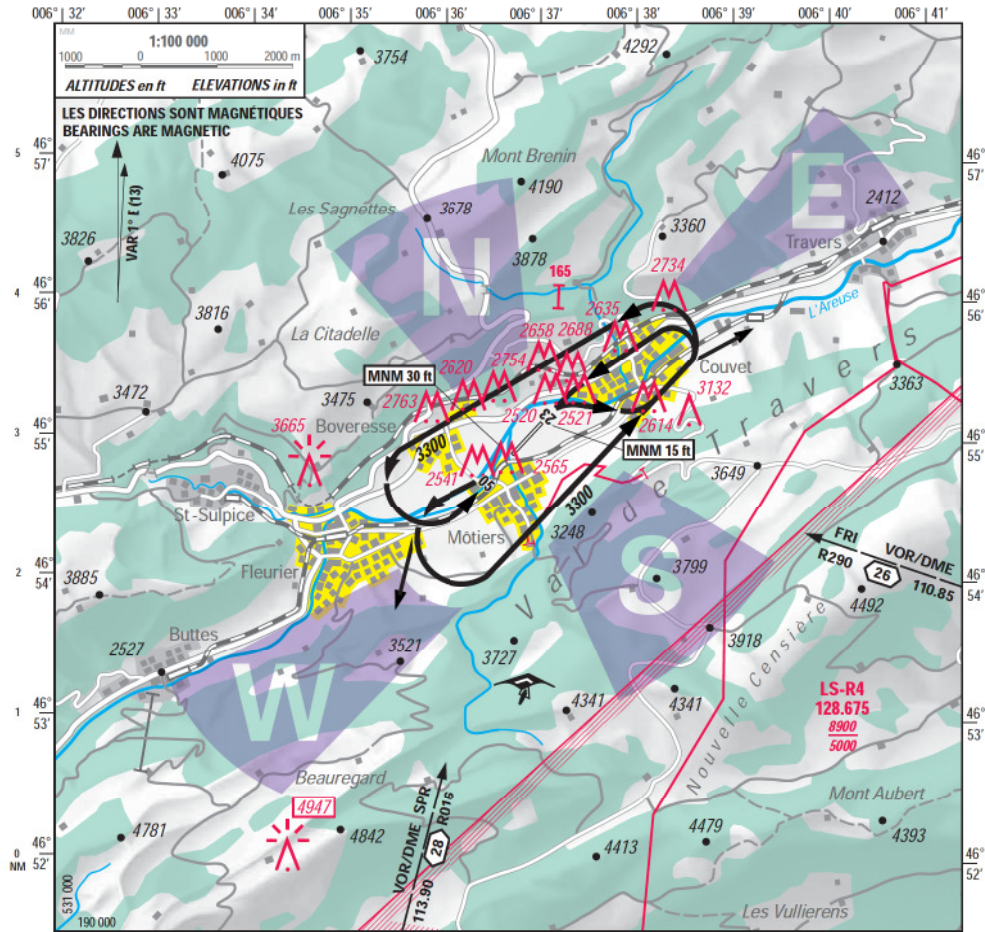
**AD 126.65**

**MÔTIERS**

ELEV 2402 ft (732 m)


PPR


LSTO



**CTN: AD en montagne. Vol d'initiation recommandé.**  
**AD in mountainous area. Familiarization flight recommended.**

**Contact RTF 5 min avant ETA**  
**RTF report 5 min prior ETA**

 Secteurs ARR préférentiels: **NORD, EST, SUD et OUEST**  
Preferential ARR sectors: **NORTH, EAST, SOUTH and WEST**

 Zones sensibles au bruit  
Noise sensitive areas



**CTN:** APCH 23 courte exécutée occasionnellement  
Short APCH 23 carried out occasionally

**Altitudes en ft; Hauteurs en ft**  
**Altitudes in ft; Heights in ft**

COR: DBST, VAR: RDL

© 2014 Swisstopo, CH-3084 Wabern